



Collar saddles with rubber type ARG90

Galvanized steel pressed symmetrical branches 90°, with rubber sealing.

Order example

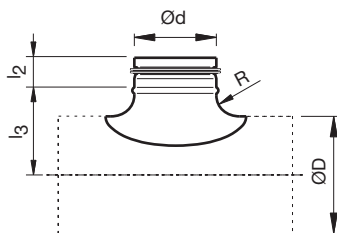
■ ARG90, 315, 250

Explanation :

ARG90 = Type of collar saddle

315 = Diameter of main duct

250 = Diameter of branche



Dimensions

For dimensions please check our website www.airtradecentre.com